

**Anti-MUC1 Picoband Antibody**  
**Catalog # ABO12811****Specification**

---

**Anti-MUC1 Picoband Antibody - Product Information**

Application	WB, IHC-P, E
Primary Accession	<a href="#">P15941</a>
Host	Rabbit
Reactivity	Human, Mouse, Rat
Clonality	Polyclonal
Format	Lyophilized

**Description**

Rabbit IgG polyclonal antibody for MUC1 detection. Tested with WB, IHC-P, Direct ELISA in Human;Mouse;Rat.

**Reconstitution**

Add 0.2ml of distilled water will yield a concentration of 500ug/ml.

**Anti-MUC1 Picoband Antibody - Additional Information**

**Gene ID** 4582

**Other Names**

Mucin-1, MUC-1, Breast carcinoma-associated antigen DF3, Cancer antigen 15-3, CA 15-3, Carcinoma-associated mucin, Episialin, H23AG, Krebs von den Lungen-6, KL-6, PEMT, Peanut-reactive urinary mucin, PUM, Polymorphic epithelial mucin, PEM, Tumor-associated epithelial membrane antigen, EMA, Tumor-associated mucin, CD227, Mucin-1 subunit alpha, MUC1-NT, MUC1-alpha, Mucin-1 subunit beta, MUC1-beta, MUC1-CT, MUC1, PUM

**Application Details**

Western blot, 0.1-0.5 µg/ml<br><br> Immunohistochemistry(Paraffin-embedded Section), 0.5-1 µg/ml<br><br> Direct ELISA, 0.1-0.5 µg/ml<br>

**Subcellular Localization**

Apical cell membrane.

**Tissue Specificity**

Expressed on the apical surface of epithelial cells, especially of airway passages, breast and uterus. Also expressed in activated and unactivated T-cells. Overexpressed in epithelial tumors, such as breast or ovarian cancer and also in non-epithelial tumor cells. Isoform Y is expressed in tumor cells only.

**Contents**

Each vial contains 4mg Trehalose, 0.9mg NaCl, 0.2mg Na<sub>2</sub>HPO<sub>4</sub>, 0.05mg NaN<sub>3</sub>.

**Immunogen**

E. coli-derived human MUC1 recombinant protein (Position: S1062-V1139).

**Cross Reactivity**

No cross reactivity with other proteins.

**Storage**

**At -20°C; for one year. After reconstitution, at 4°C; for one month. It can also be aliquotted and stored frozen at -20°C; for a longer time. Avoid repeated freezing and thawing.**

**Anti-MUC1 Picoband Antibody - Protein Information**

**Name** MUC1

**Synonyms** PUM

**Function**

The alpha subunit has cell adhesive properties. Can act both as an adhesion and an anti-adhesion protein. May provide a protective layer on epithelial cells against bacterial and enzyme attack.

**Cellular Location**

Apical cell membrane; Single-pass type I membrane protein. Note=Exclusively located in the apical domain of the plasma membrane of highly polarized epithelial cells After endocytosis, internalized and recycled to the cell membrane Located to microvilli and to the tips of long filopodial protrusions [Isoform Y]: Secreted. [Mucin-1 subunit beta]: Cell membrane. Cytoplasm. Nucleus. Note=On EGF and PDGFRB stimulation, transported to the nucleus through interaction with CTNNB1, a process which is stimulated by phosphorylation. On HRG stimulation, colocalizes with JUP/gamma-catenin at the nucleus

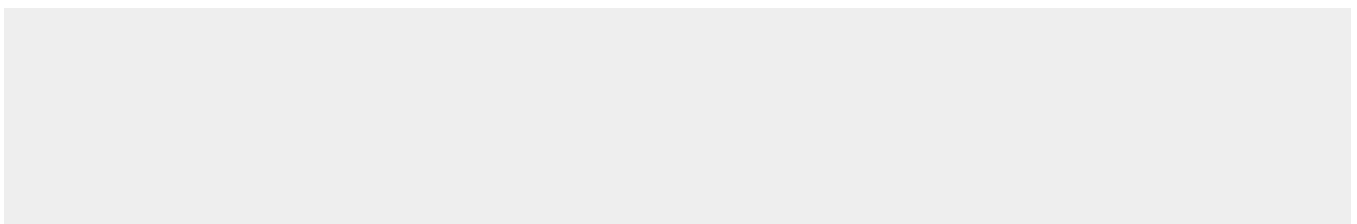
**Tissue Location**

Expressed on the apical surface of epithelial cells, especially of airway passages, breast and uterus. Also expressed in activated and unactivated T-cells. Overexpressed in epithelial tumors, such as breast or ovarian cancer and also in non-epithelial tumor cells. Isoform Y is expressed in tumor cells only

**Anti-MUC1 Picoband Antibody - Protocols**

Provided below are standard protocols that you may find useful for product applications.

- [Western Blot](#)
- [Blocking Peptides](#)
- [Dot Blot](#)
- [Immunohistochemistry](#)
- [Immunofluorescence](#)
- [Immunoprecipitation](#)
- [Flow Cytometry](#)
- [Cell Culture](#)

**Anti-MUC1 Picoband Antibody - Images**

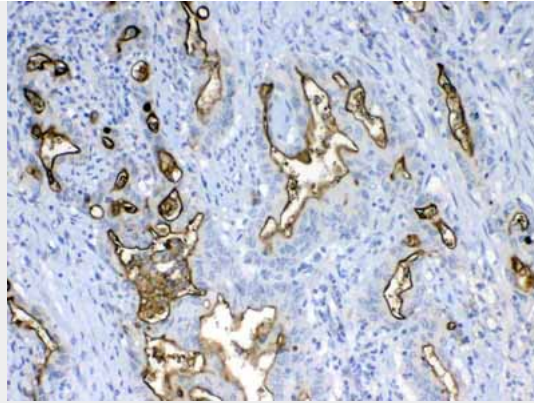


Figure 2. IHC analysis of MUC1 using anti-MUC1 antibody (ABO12811).MUC1 was detected in paraffin-embedded section of human colon cancer tissue. Heat mediated antigen retrieval was performed in citrate buffer (pH6, epitope retrieval solution) for 20 mins. The tissue section was blocked with 10% goat serum. The tissue section was then incubated with 1 $\mu$ g/ml rabbit anti-MUC1 Antibody (ABO12811) overnight at 4 $^{\circ}$ C. Biotinylated goat anti-rabbit IgG was used as secondary antibody and incubated for 30 minutes at 37 $^{\circ}$ C. The tissue section was developed using Streptavidin-Biotin-Complex (SABC) with DAB as the chromogen.

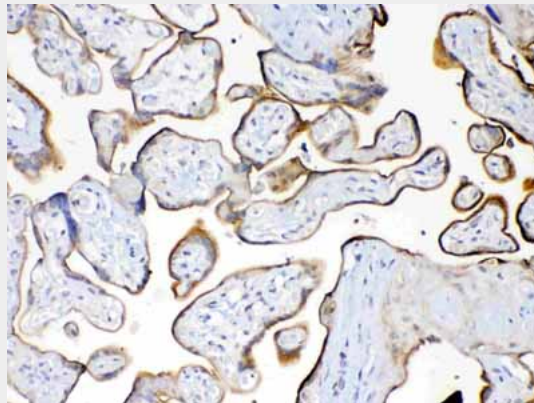


Figure 3. IHC analysis of MUC1 using anti-MUC1 antibody (ABO12811).MUC1 was detected in paraffin-embedded section of human placenta tissue. Heat mediated antigen retrieval was performed in citrate buffer (pH6, epitope retrieval solution) for 20 mins. The tissue section was blocked with 10% goat serum. The tissue section was then incubated with 1 $\mu$ g/ml rabbit anti-MUC1 Antibody (ABO12811) overnight at 4 $^{\circ}$ C. Biotinylated goat anti-rabbit IgG was used as secondary antibody and incubated for 30 minutes at 37 $^{\circ}$ C. The tissue section was developed using Streptavidin-Biotin-Complex (SABC) with DAB as the chromogen.

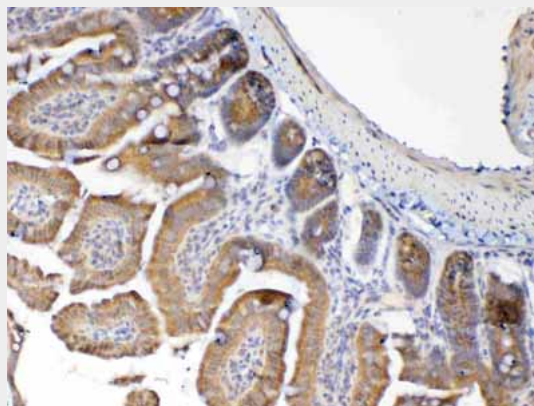


Figure 4. IHC analysis of MUC1 using anti-MUC1 antibody (ABO12811).MUC1 was detected in

paraffin-embedded section of mouse small intestine tissue. Heat mediated antigen retrieval was performed in citrate buffer (pH6, epitope retrieval solution) for 20 mins. The tissue section was blocked with 10% goat serum. The tissue section was then incubated with 1 $\mu$ g/ml rabbit anti-MUC1 Antibody (ABO12811) overnight at 4 $^{\circ}$ C. Biotinylated goat anti-rabbit IgG was used as secondary antibody and incubated for 30 minutes at 37 $^{\circ}$ C. The tissue section was developed using Streptavidin-Biotin-Complex (SABC) with DAB as the chromogen.

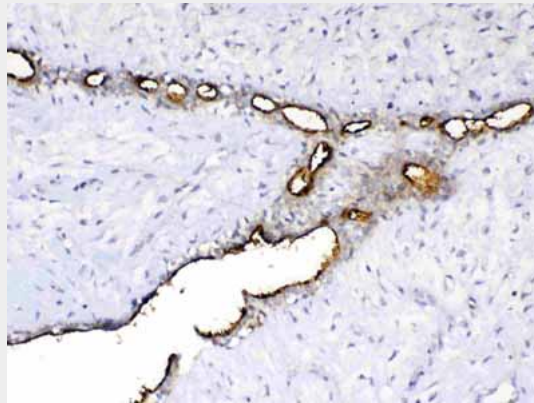


Figure 5. IHC analysis of MUC1 using anti-MUC1 antibody (ABO12811). MUC1 was detected in paraffin-embedded section of human mammary cancer tissue. Heat mediated antigen retrieval was performed in citrate buffer (pH6, epitope retrieval solution) for 20 mins. The tissue section was blocked with 10% goat serum. The tissue section was then incubated with 1 $\mu$ g/ml rabbit anti-MUC1 Antibody (ABO12811) overnight at 4 $^{\circ}$ C. Biotinylated goat anti-rabbit IgG was used as secondary antibody and incubated for 30 minutes at 37 $^{\circ}$ C. The tissue section was developed using Streptavidin-Biotin-Complex (SABC) with DAB as the chromogen.

#### **Anti-MUC1 Picoband Antibody - Background**

Mucin 1, cell surface associated (MUC1) or polymorphic epithelial mucin (PEM) is a mucin encoded by the MUC1 gene in humans. This gene encodes a membrane-bound protein that is a member of the mucin family. Mucins are O-glycosylated proteins that play an essential role in forming protective mucous barriers on epithelial surfaces. It is mapped to 1q22. Mucin 1 is a transmembrane mucin normally expressed on the apical borders of secretory epithelial cells. Overexpression of Mucin 1 is often associated with colon, breast, ovarian, lung and pancreatic cancers. The protein serves a protective function by binding to pathogens and also functions in a cell signaling capacity. Mucin 1 stimulated ESR1-mediated transcription and contributed to estradiol-mediated growth and survival of breast cancer cells. This gene also can suppress pulmonary innate immunity, and its antiinflammatory activity may play an important modulatory role during microbial infection.